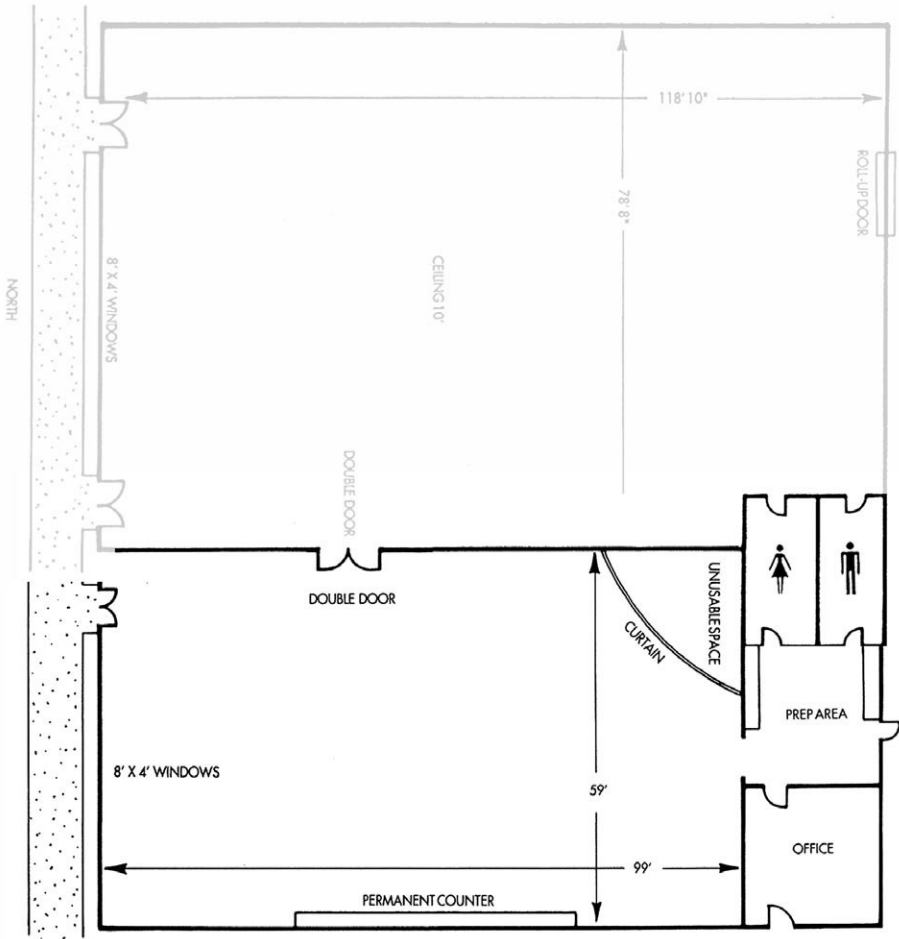




FLOWER BUILDING

This one-story, cinderblock building has glass frontage, flanked by trees and walkways. A spacious prep area highlights the Flower Building. The Flower Building is located next to the School Arts Building with an adjoining door for tandem use .



- Dimensions : 59' x 99' / 5,481 square feet
- Booth spaces : 30: 10' x 10' each
- Seating : 300 chair maximum
- Lighting : Fluorescent
- Ceiling : 10' - 15' arched
- Floor : Concrete
- Electrical : 110v available .
- Temp Controls : Heating and cooling
- Parking : Adjacent with curbside handicap
- Access Doors : Double front door and kitchen exit
- Additional Features: 21' x 32' prep area (two double sinks, counters, cabinets)
50' permanent counter west wall
Adjoining double door to school Arts Building
- Featured Events : Restrooms
Small parties, exhibits, auctions, rummage sales, customer events, meeting rooms and wedding receptions

